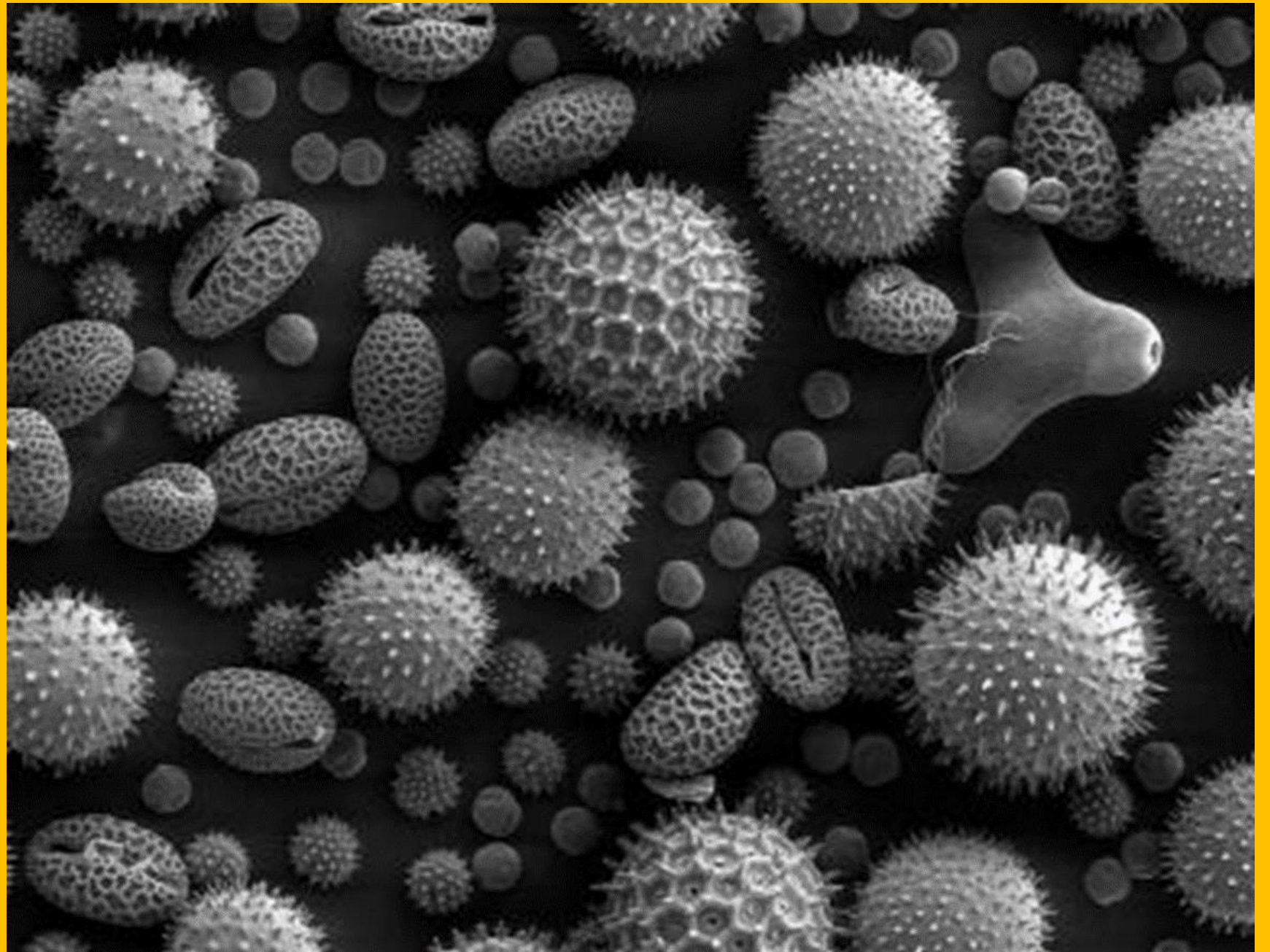


What on
earth is
this??



Evidence for Climate Change

Quaternary to present day

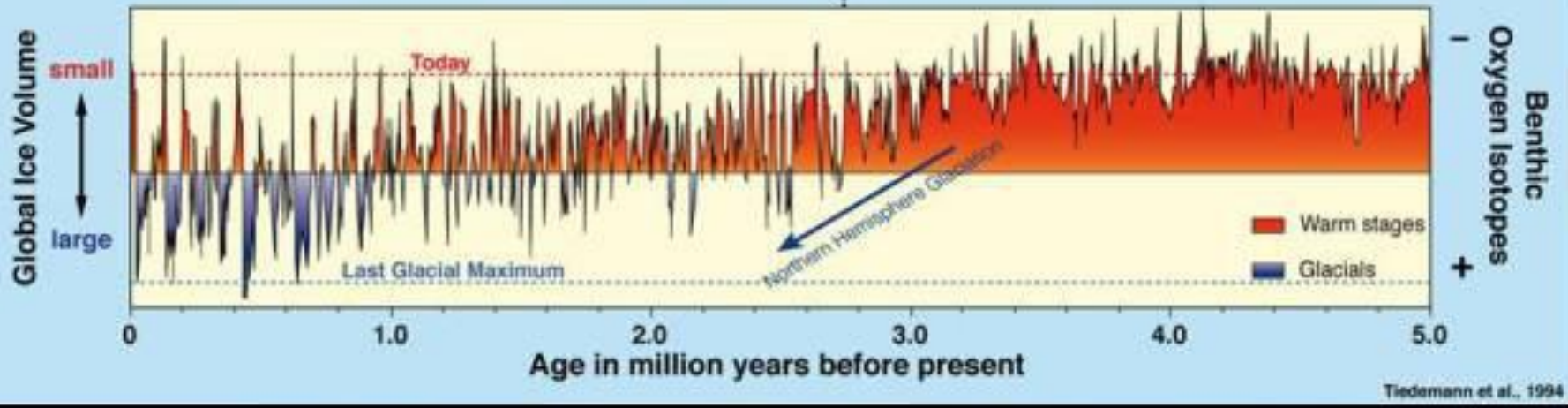
Glacial



Interglacial



No Northern Hemisphere ice cap



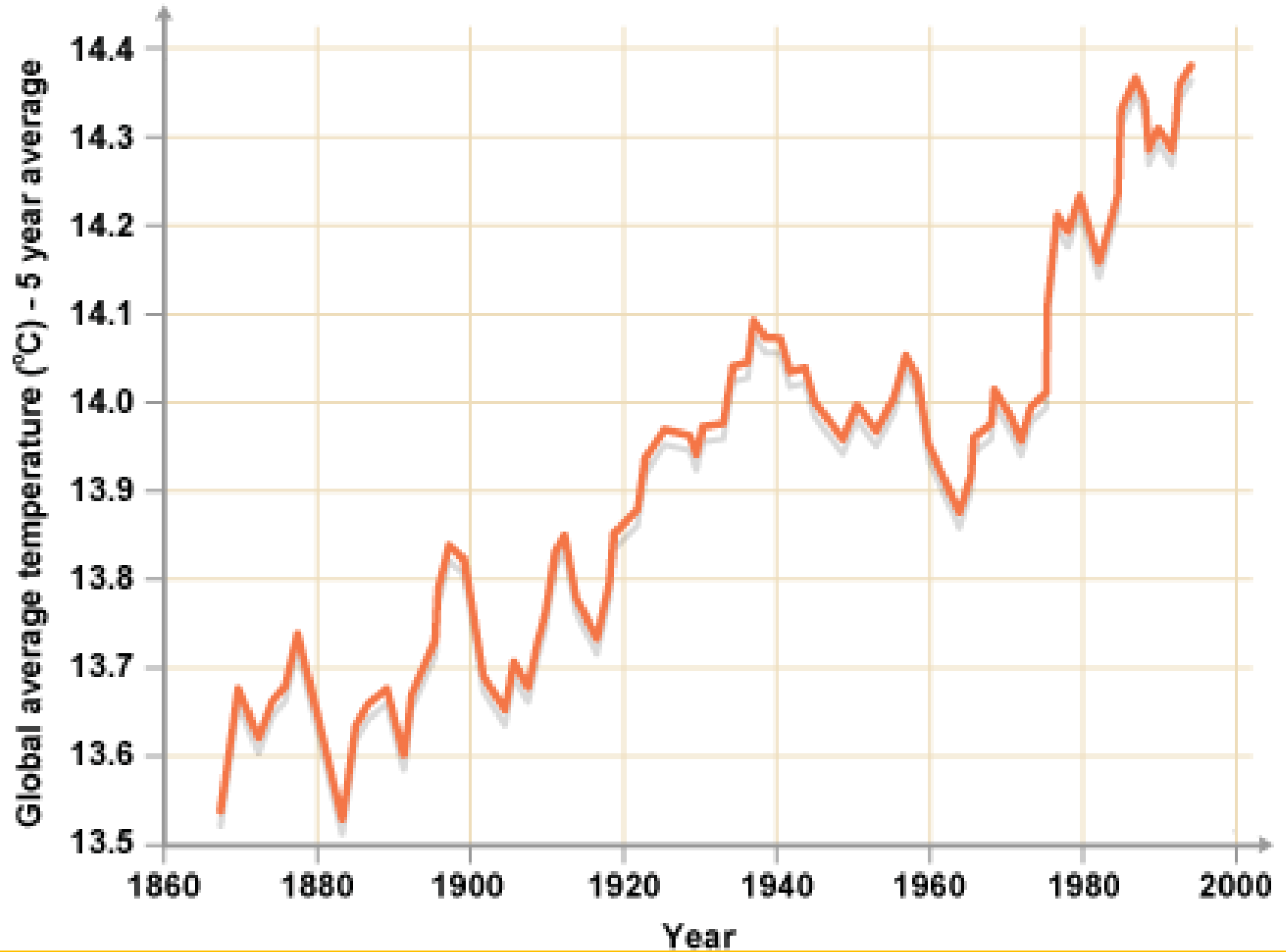
Quaternary = last 2.6 million years

Task 1: Read the article

Questions

- 1) What has happened to glaciers during the Quaternary period?
- 2) What effect has this had on sea levels?
- 3) What caused ice ages to happen?
- 4) How long do ice ages last?
- 5) How long are the warmer inter glacial periods between ice ages?
- 6) Give an example to explain how ice ages facilitate animal migration
- 7) Draw a sea food chain for the Quaternary
- 8) When and where did the first modern humans evolve?

Time line



Rocks and fossils

- **Rocks and fossils** - these can be studied for information covering longer time periods. For instance, limestone found in Yorkshire would have been formed on the bottom of a warm seabed millions of years ago.



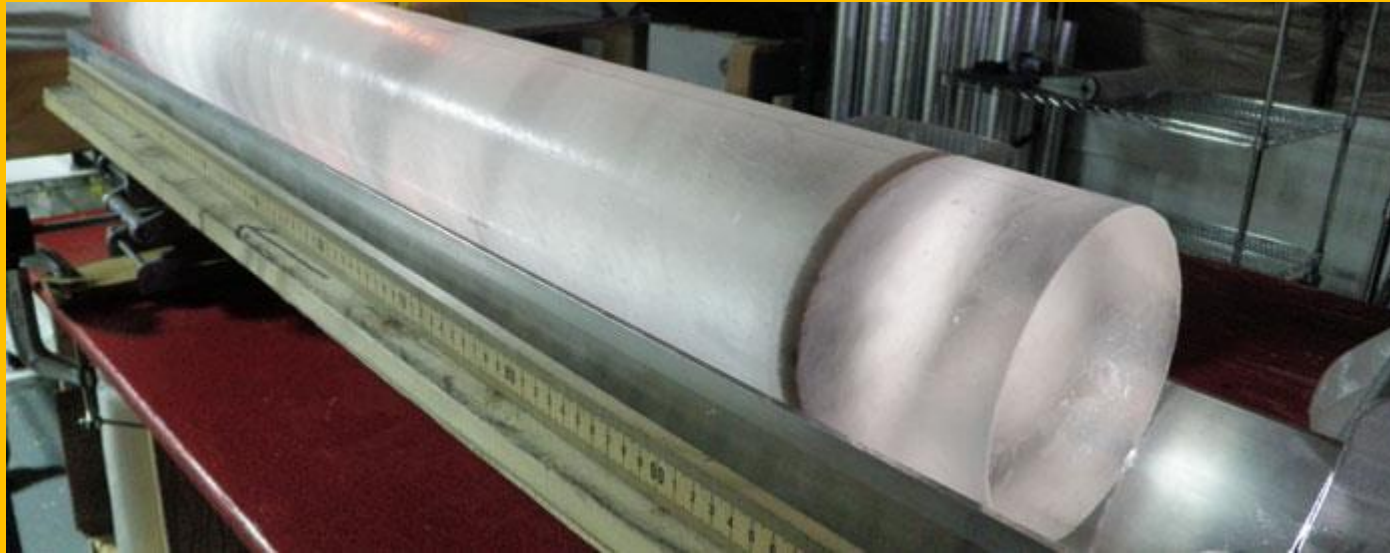
Weather recordings

- **Weather recordings** - thermometers are more accurate now and digital readings can be recorded remotely.

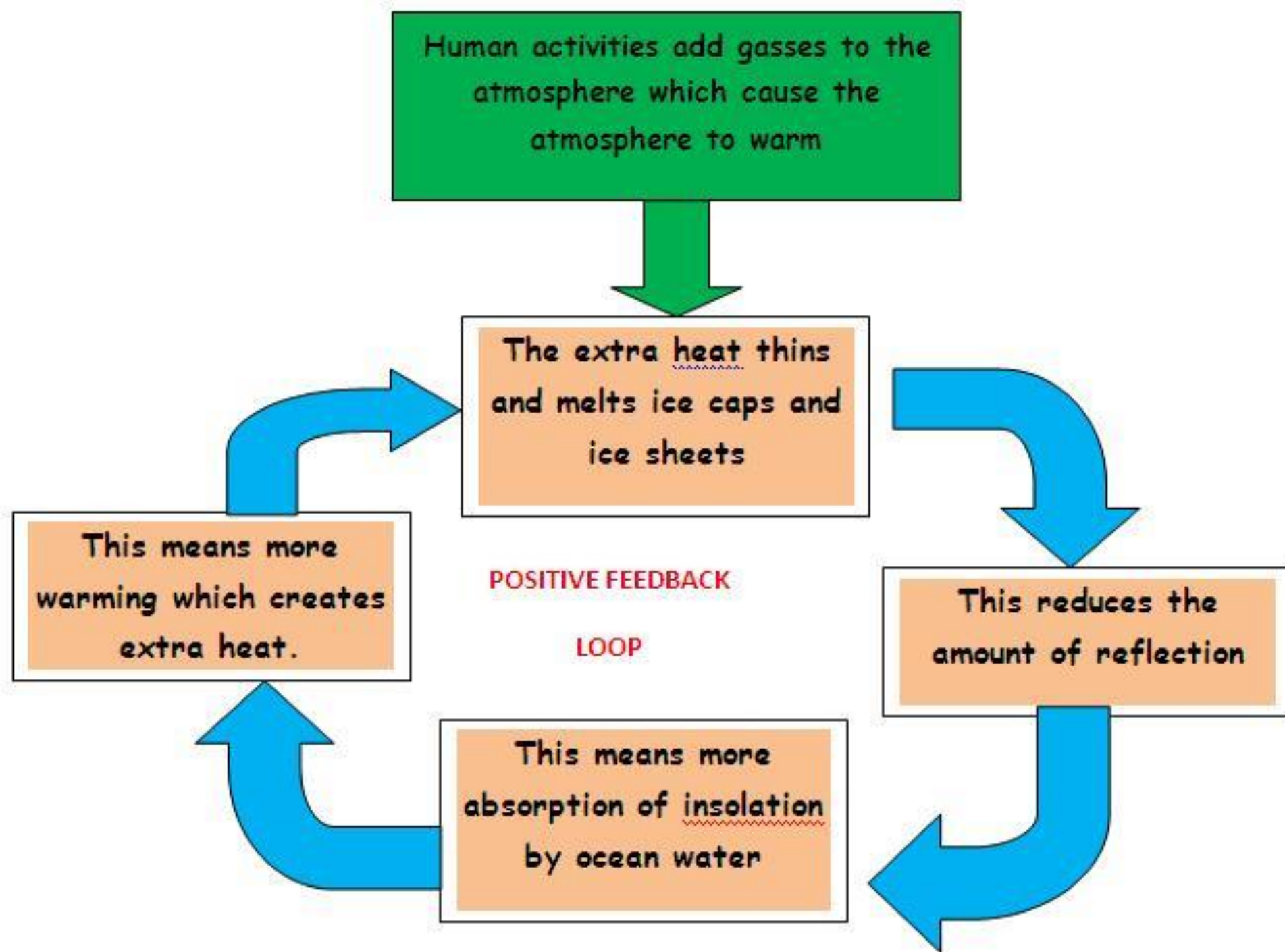


Ice Cores

- **Ice cores** - locked inside ice are molecules and trapped air, which are preserved year on year with more snowfall. Subtle changes in temperature can be measured from ice cores extracted in Antarctica.



Ice cover - areas such as Greenland and the Arctic have seen thinning of ice sheets.



Glacial retreat

- photos show that many mountain glaciers have retreated in the last 50 years. However this could partly be due to a lack of snowfall



Analysis of pollen and trees

