

# MOUNT ST HELENS: A BREAKDOWN OF EVENTS

To check your understanding of the events on 18 May 1980, number the four diagrams in the correct order and then add the breakdown of events from the next sheet as annotations (labels) to help explain them. Make sure you put them in the order they happened.



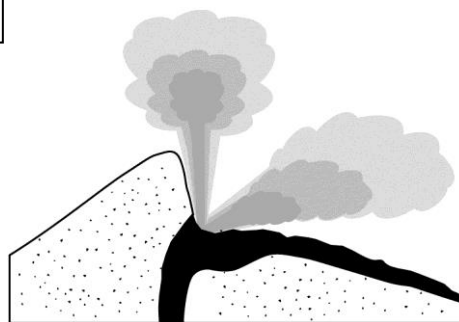
---

---

---

---

---



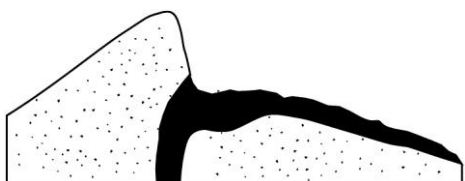
---

---

---

---

---



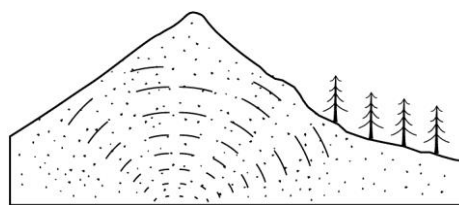
---

---

---

---

---



---

---

---

---

---

## MOUNT ST HELENS: A BREAKDOWN OF EVENTS

Tremors measuring up to 4.1 rocked the area.

The North face collapses creating a mighty landslide.

Plumes of ash and smoke can be seen for miles.

Mount St Helens has a new shape.

The scientists move in to observe events.

Police evacuate the area but Harry Truman refuses to go.

The blast is both upwards and sideways.

370 square miles of land lie devastated.

Harry Truman is the first to die.

The North side of the mountain bulges as the magma builds up.