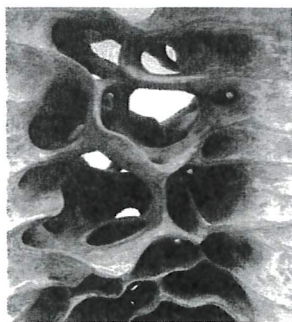
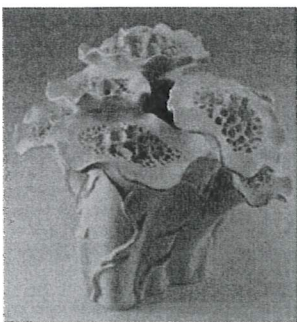
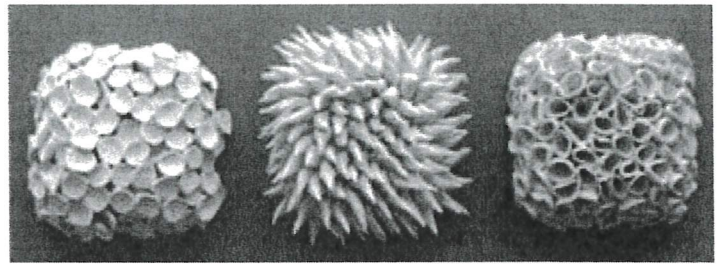


Year 7 Art Homework 6: 'Texture'

primary source	drawing/recording from a real object/item in front of you
secondary source	drawing/recording from an image someone else has produced
actual texture	the real feel of something. Eg: 'the sculpture is smooth to the touch'.
simulated texture	texture that is seen, you cannot touch it. Eg: a drawing of a fluffy cat
relief	when elements of a design rise up from a background surface
ceramics	pots and other articles made from clay <u>hardened</u> by high heat (around 880 degrees Celsius) in a kiln.
ceramicist	a person that creates artwork or artefacts from clay
air dry clay	a type of modelling clay that hardens and dries naturally when exposed to room-temperature air, eliminating the need for firing in a kiln.
slip	clay particles in water, used as the 'glue' when constructing items from clay

Heather Knight

Knight is an American porcelain ceramist who has a passion for all things natural. She hand builds all of her pieces and uses chopsticks as her main building and textural tool.



Elizabeth Shriver is also an American ceramicist. Much of her work is inspired by plants, coral, fossils and rock formations. She likes to add textural effects to the surfaces of her work or to carve through the full thickness of the clay in places.

air dry clay

On average, air dry clay takes 24 hours to dry. For thicker pieces, it may take up to 72 hours.

Sealing air dry clay is crucial for preserving and protecting your creations. Once your piece is fully dry, it can be sealed with a varnish or glaze of your choice using a brush. Apply the sealant in light, even layers. Multiple light layers are better than one thick coat. Sealing not only preserves and protects your creations but also gives them a polished and appealing finish.

Year 7 Art Homework 6

Name:

Art class:

*Use the information on the knowledge organiser to complete the questions below.
Learn the answers as you will be tested on this next lesson!*

1) What is the definition of a primary source in art?

.....

2) What is the definition of a secondary source in art?

.....

.....

3) What is the definition of simulated texture?

.....

4) What is the definition of actual texture?

.....

5) What is a ceramicist?

.....

6) Name two American ceramicists that are inspired by the natural world:

.....

.....

7) Name an unusual tool used by ceramicist Heather Knight:

.....

8) What is 'slip'?

.....

9) How long does air dry clay take to dry?

.....

.....

10) Why is it good to seal items made from air dry clay with varnish or a glaze?

.....

.....

Validation is checking that data is **valid** – it is plausible or possible. As data is entered into a database it is checked against a set of rules known as **validation checks**. Data that is input will either be valid (conforms to the rules) or **invalid** (doesn't conform to the rules).

Possible validation checks

Validation check	Meaning	Example	Examples
Type check	The type of data will be an integer, real (floating point number), date, text (string) etc. These are data types so it is a type check.	A computer game subscription service needs customer ages. It will check that the type of data entered is valid.	Valid: 10/03/00 Invalid: "March 10th"
Format check	The format that the data item is in will be checked against a pattern.	A postcode must have the one of the following formats (L=Letter; N=Number) LLNL NLL or LNL NLL or LN NLL or LNN NLL or LLN NLL or LLNN NLL .	Valid: SW1A 1AA Valid: ZZ12 3AB Invalid: LON12 5B
Length check	The length of a string is checked to be no longer than a maximum.	A phone number is checked to be 12 digits or less.	Valid: 012221234561 Valid: 999 Invalid: 1234567890123
Presence check	Checks that a data item has been completed.	A box to conform that a user has accepted the terms and conditions. The box must be ticked (true).	Valid: Ticked Invalid: Not ticked
Range check	A number between two values (a range) has been entered.	An user's age must be between 0 and 120.	Valid: 15 Invalid: 215
Lookup check	The value entered is compared against a set of known values.	A county entered in an address is checked against known counties in the UK.	Valid: Bedfordshire Invalid: Texas
Check digit	An extra digit is added to the end of a number based on the number. If any number is mistyped then the check digit will be wrong.	An ISBN number has a check digit at the end. Neither of these ISBN numbers are being used, however, the first one is a valid ISBN number and could be used.	Valid: 123436789-0 Invalid: 123456789-0

Note: Just because data is valid it doesn't mean it is correct. ZZ12 3AB is a valid post code in the format check above; however, it is not a real post code.

Verification is checking the accuracy of (**verifying**) the data. **Double entry verification** is used for changing passwords as one way to verify what has been typed. With **on screen prompts**, what they wrote can be given back to the user with a prompt asking them to read and confirm that it is correct.

1. Checking that data entered is plausible or possible is known as:

[1]

2. A process that checks that data entered is correct is known as:

[1]

3. Match the validation checks on the left with the data to be entered on the right.

- Type check
- Range check
- Format check
- Length check

- The a name entered is less than 30 characters
- An integer is entered
- A number between 13 and 19
- That a name starts with a capital letter

[4]

4. A user needs to enter a date in the format dd/mm/yyyy. For each of the following say if they are valid or invalid. Cross out the wrong answer.

- a) 18/02/2001 Valid | Invalid
- b) 7/3/1999 Valid | Invalid
- c) 21/12/00 Valid | Invalid
- d) 03-12-2005 Valid | Invalid

[4]

5. A user tries to submit a website form, however, it will not continue because they haven't filled in a text box for their username. What validation check has the website done? _____

[1]

6. A website asks a user to enter the city in which they were born. It then checks the database to see if the city already exists before allowing the data to be entered. What validation check has the website done? _____

[1]

7. A shop assistant enters a bar code number to the checkout screen. The screen immediately says that they have made a mistake in what they entered. What validation check is being carried out? _____

[1]

8. Complete the following paragraph with the words beneath it.

A website wants to verify a user password for a new account. It asks them to enter the password twice. This is known as _____ verification. The website has asked them for their username choice. It now uses an _____ where it displays their choice so that they can confirm they are happy with the username. The user now uses a credit card on the online store. They have to type in a 16 digit credit card number. The website says that they have typed the wrong number because it is using a _____. The website also says that the expiry date entered is invalid because it is using a _____.
check digit double entry range check on screen prompt

[4]

9. A website asks a user for their age. They enter *twelve* and the website says it is an invalid entry. The website is for users who are 13+.

[1]

- a) What validation check is the website doing? _____
- b) They now enter 12. The website again rejects the data as they are too young. What check is the website doing? _____
- c) They now *lie* and enter 13. They enter a username with 30 characters. The website says that they have entered too many characters. Which type of check is being carried out? _____

[1]

[1]