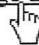


One of the key features of the **World Wide Web** is the ability to link web pages together with **hyperlinks**. A hyperlink is simply some text that when clicked will go to another webpage on the web.

In HTML we make a hyperlink like this:


| HTML   | Output   |
|--|--|
| <code>&lt;a href="www.example.com/page2.html"&gt;Go to page 2&lt;/a&gt;</code> | <u>Go to page 2</u><br> |

These are called **anchor tags**, hence the letter **A** is used. Inside the **start tag** is an **attribute** called **href**. This stands for **hyperlink reference**. All attributes are written in this way:

*attribute\_name="attribute\_value"*

Web pages contain text. Images, sound and video are all saved in separate files which are then **embedded** or hyperlinked in the web page using HTML. The browser is responsible for underlining the hyperlink and making it blue. This formatting can be overridden by using **CSS**.

To insert an image to a webpage the following HTML is used.

| HTML  | Output  |
|---|---|
| <code>&lt;img src="www.example.com/cat.png" alt="A cute cat" height="50" width="70"/&gt;</code> |  |

The image start tag contains a number of attributes. **src** is the **image source** – the filename or full **URL (Uniform Resource Locator)** – also known as a web address). The **alt** attribute is **alternative text** that will be shown on a web browser that cannot show images. It is also useful for users who are blind and need their web browser to convert their web pages to speech. The height and width attributes are used for the height and width of the image. This doesn't need to be the original dimensions of the image as the web browser can scale the image.

If the image file is missing then a blank box or red X will be displayed instead.

HTML is now a type of **XML (Extensible Markup Language)**. XML is used for far more than just web pages and is used for sharing other types of information. XML rules state that tags must be in **lower case** and if there is no end tag then it must take the form: **<element attributes/>**. This is why at the end of the `img` tag there is a `/>`.

The web browser will ignore more than 1 space character in text. It will also ignore character returns. It uses the paragraph tags to work out where to place text. If you want to include an extra line in a web page then you use the tag `<br/>`. This stands for **line break** and since it is a start and end tag in one, it again ends with `/>`.

| HTML                     | Output |
|--------------------------|--------|
| <code>&lt;hr/&gt;</code> | <hr/>  |

The `<hr/>` tag places a **horizontal rule** across the whole web page.

1. Blue underlined text on a webpage is normally what? [1]

2. Match the HTML element on the left to the meaning on the right.

- br
- img
- hr
- a

- The anchor element – used for hyperlinks
- A horizontal rule – places a line across the webpage
- Places an image in the webpage
- Places a line break in the webpage

3. XML is another markup language. What does it stand for? [1]

4. Look at the following HTML that will display an image and answer the questions beneath:

```

```

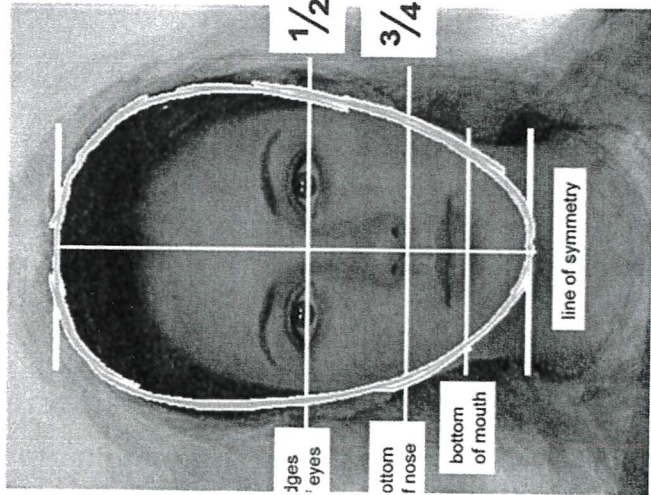
- a) How many pixels wide is the image? [1]
- b) How many pixels tall is the image? [1]
- c) What is the filename of the image that will be displayed? [1]
- d) What does the attribute *src* stand for? [1]

5. Look at the HTML on the left and answer the questions.

```
1 <doctype html>
2 <html>
3 <body>
4 <p>
6 A <a href="cobra.html">
7 cobra</a> is a poisonous
8 snake
9
10 </p>
11 </body>
12 </html>
```

- a) What format is the image that will be inserted? [1]
- b) *src*, *width* and *height* are all called what in HTML? [1]
- c) What text will be displayed as a hyperlink in the webpage? [1]
- d) A horizontal line needs to be shown beneath the text. What HTML would be written in line 9? [1]
- e) There is a mistake in line 10. Rewrite line 10 here: [1]
- f) The hyperlink displays as blue underlined text. What language would you use to change these properties? [1]
- 6. Write the HTML for a hyperlink that links to "page2.html". The hyperlink text should say "Page 2". [1]
- 7. Hyperlinks use the element "a". What does this stand for? [1]
- 8. Write the HTML to embed an image with the filename cobra2.png. You don't need to include the height, width or alt attributes. [1]
- 9. What is the purpose of the alt attribute in the image tag? [1]

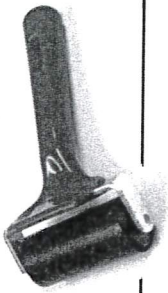
|                    |   |
|--------------------|---|
| <b>identity</b>    | the characteristics determining who or what a person or thing is  |
| <b>portrait</b>    | a painting, drawing, photograph, or engraving of a person, especially one depicting only the face or head and shoulders |
| <b>mark-making</b> | a technique used to show textural and/or tonal effects  |
| <b>composition</b> | how the elements of art are arranged in an artwork  |
| <b>proportion</b>  | the size of things are in relation to one another   |
| <b>repetition</b>  | repeating something for effect  |



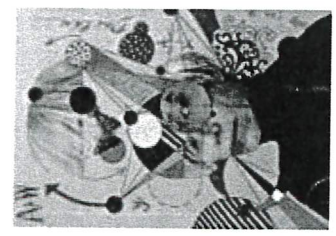
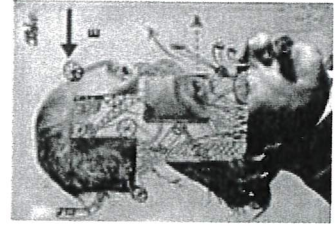
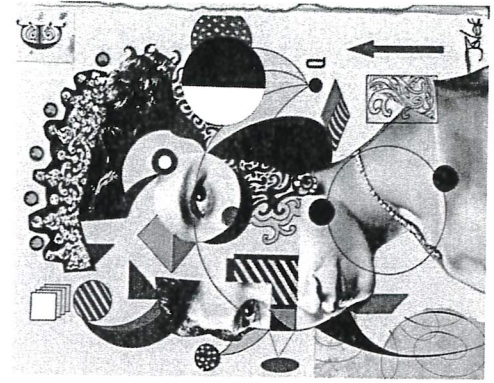
**mono** = single /one

A **mono-print** is a unique single print created using oil pastel or printing ink.

The **brayer** is a crucial printmaking tool used to thinly apply ink or paint onto printing plates, ensuring an even distribution of colour.



**Loui Jover** is an Australian painter and artist. He was born in Serbia but moved to Australia aged 1, where he grew up. He is known for his ink wash paintings on vintage book pages and his **deconstructed** portraits.



- 1) What is the meaning of 'identity'?  
.....  
.....
- 2) What is depicted in a portrait?  
.....  
.....
- 3) When drawing a portrait, how far down the head are our eyes?  
.....
- 4) When drawing a portrait, how far down the head is the bottom of our nose?  
.....
- 5) When drawing a portrait, what is the vertical guideline down the centre of the face called?  
.....
- 6) What is a mono-print?  
.....  
.....
- 7) Name the print making tool used to apply ink to printing plates:  
.....  
.....
- 8) What is unusual about the portraits that artist Loui Jover creates?  
.....  
.....

