

WHITWORTH COMMUNITY HIGH SCHOOL

UNIFORM POLICY

Date effective from:	September 2026
Prepared by:	Mr A Kewin
Date of next review:	September 2027
Ratified by Governors	C&S – 02.02.26 Min Ref : CS2609

School Uniform for students in Years 7-11

Uniform Policy Rationale

Whitworth Community High School insists on the highest standards of uniform. It is important that students take pride in their appearance and are aware of the impression their appearance makes within the community. Whitworth Community High School seeks to promote a sense of belonging and shared identity through the implementation of its uniform policy.

Whilst wearing a uniform is not, on its own, likely to improve learning, it does support a broader school improvement process which includes the development of our 'Climbing Higher' aspirational ethos and the improvement of behaviour and discipline.

The Headteacher will be the arbiter in all matters relating to uniform, dress and appearance. Parents/carers and students are advised to consult the Headteacher, or a member of the Senior Leadership Team, if they are considering uniform, dress or appearance changes that might conflict with the school policy.

Any student who arrives wearing the incorrect uniform, wearing inappropriate jewellery, with henna/mehndi without prior permission, or with an unsuitable hairstyle or hair colour may be removed from lessons and parent/carer contacted. A record will be maintained on the school system. If a student ignores or persistently ignores the uniform code, the school will need to employ further sanctions.

Duties Under The Equalities Act 2010

The Equality Act 2010 prohibits discrimination against an individual based on protected characteristics, which include sex, religion or belief, and gender reassignment.

To avoid discrimination this policy purposely:

- Avoids listing uniform items based on sex, to give all students the opportunity to wear the uniform they feel most comfortable in or that most reflects their self-identified gender
- Makes allowances on religious and/or cultural grounds

Limiting The Cost of School Uniforms

The following steps have been taken to ensure that uniform is affordable, made available at a reasonable cost and provides the best value for money in line with the statutory guidance from the DfE:

- Limiting the amount of uniform items with distinctive characteristics such as embroidered logos
- Not requiring any items to be individualised e.g. PE kits do not require student initials
- Avoiding specific requirements for items students could wear on non-school days, such as coats and bags
- Keeping the number of optional branded items to a minimum
- Avoiding different uniform requirements for different classes, years, houses and extra-curricular activities
- Making sure that the majority of uniform items can be purchased from low cost retailers / supermarkets e.g. socks, trousers, shirts, shoes, bags, coats

Blazers

Blue blazer for Y7 to Y10 blazers are available from Anns Schoolwear in Bacup.

Grey blazer for Y11 only - are available from <https://www.swischoolwear.co.uk/>. Details are on the web site.

School Tie

Blue with red stripe clip-on tie - this is only available from school. A red tie is awarded to Y10/Y11 Prefects.

White Shirt or Blouse

Must be tucked into skirt or trousers, top buttons fastened. Shirts/blouses can be purchased from any retailer to reduce costs to parents/carers as long as they conform to school standards.

Skirt or Trousers

The WCHS skirt is only available from school but is sold at cost price to reduce costs to parents/carers. It is to be worn with the hem of the skirt on the knee or longer (not shorter, and rolling up of waistbands is not permitted) This is to help us safeguard the students who choose to wear one. If a student chooses to roll up their skirt, their Respect Card will be signed. Trousers must be conventional black tailored school trousers (not skinny fit, denim, canvas, stretch, leggings or jeggings). Please purchase trousers that are long enough to at least touch the shoe (no 'crop' or 'ankle grazers' please).

Trousers can be purchased from any retailer to reduce costs to parents/carers as long as they conform to the above description. In response to parent/carer feedback, a service has been set up on <http://www.swidtp.co.uk/> for any parents/carers who are struggling to find suitable trousers that meet the policy requirements. A pre-purchase fitting service is available in school as is a free click-and-collect option for convenience and to further reduce costs to parents/carers.

Black Socks - or plain black tights – not both.

If wearing the skirt with black socks, then the socks must be knee-high with no frills. If wearing school trousers, socks must be black and above the ankle (not trainer socks). Socks can be purchased from any retailer to reduce costs to parents/carers as long as they conform to school standards.

Shoes

Low heeled, below the ankle, completely plain black leather or leather look with no coloured logos. Please note that trainers, boots (including 'Kicker' style boots), pumps, canvas, 'Dolly' shoes with no top strap, Tovni Lacers (as shown below), or similar trainer style shoes, sports branded footwear and footwear with Dr Martens soles (including yellow stitching) or similar are not acceptable. School shoes can be purchased from any retailer to reduce costs to parents/carers as long as they conform to school standards.



Outdoor Coats

Not to be worn inside the school. Coats can be purchased from any retailer to reduce costs to parents/carers as long as they conform to school standards. Coats should be worn over blazers, not underneath. Hoodies are not allowed and will be confiscated. Coats should be placed in a locker before tutor time.

School Bag

Students should bring a suitably large bag, in which they can carry their required equipment around school. Rucksack bags are most suitable for this purpose. If a student arrives at school with no school bag, they will complete their work in Reflect until one can be dropped off.

PE Kit

Whitworth Physical Education kit is available from Anns Schoolwear in Bacup, Moses or Ziggy's in Rochdale. In the PE department, we pride ourselves on the professional attire of the students. Therefore, if students are missing a part of their PE kit they will be sanctioned with a break or lunchtime detention. If students are missing all of their PE kit they will be given a 30-minute detention after school on a Friday.

If a student is injured, they should still bring their PE kit into school so that they can take an adapted role within the lesson to further their understanding. Full exemption from PE lessons and the subsequent non-requirement for students to bring in their PE kit would usually require a doctor's note.

Compulsory PE Kit

- WCHS PE top with school logo - available from Anne's, Ziggy's or Moses Schoolwear
- Plain royal blue football shorts (legacy shorts with the school logo will still be acceptable)
- Royal blue football socks or white sports socks
- Sports trainers (with non-marking soles to protect the sports hall floor)

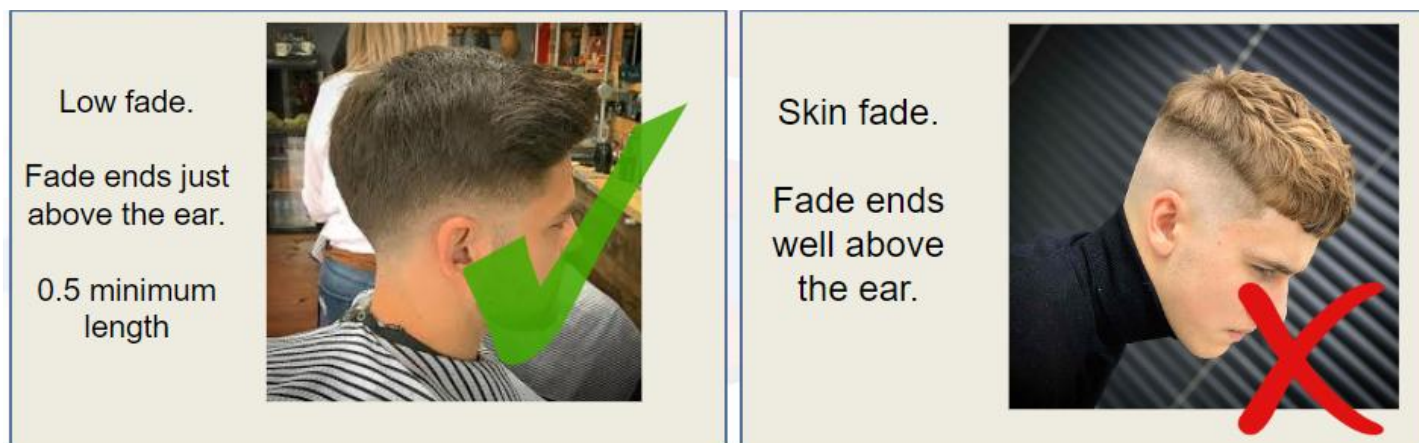
Optional Items

- WCHS Half Zip Navy Blue Mid Layer Top - available from Anne's, Ziggy's or Moses Schoolwear
- WCHS Leggings - available from Anne's, Ziggy's or Moses Schoolwear

From September 2026, skorts will no longer form part of the PE kit

Hairstyles and colouring

Parents should be aware that we do not permit extremes of fashion in students' hairstyles or dress. Added hair colours must be natural and subtle. Dip dying and bright colours such as shades of pink, red, blue, fashion copper etc are not permitted for students. Students who have shoulder-length hair, or longer, may be required to tie it back for health and safety reasons and/or if it obscures the face. Patterns cut into hair or eyebrows are also not acceptable. Eyebrows must remain natural in appearance and must not be tinted or dyed. Extreme hairstyles e.g. where some hair is very short and the rest is not with a clearly defined line are not acceptable. Close all-over shaved heads (skinhead styles) shorter than a number 2 (6mm) are not permitted. Students are allowed to have low-fade haircuts (0.5). Students must not take low fade haircuts to the extreme e.g. low fades (starting at 0.5) are acceptable but high fades/mid fades and/or skin fades are not. Undercut hairstyles are not permitted. This refers to styles where the hair is shaved or cut very short on the sides or back while remaining longer on top. Some picture examples are shown below for clarity. The decision of whether or not a hairstyle is acceptable rests with the Senior Leadership Team and the Pastoral Team and is not negotiable.



Facial hair must be kept short, neat, clean and groomed, without added colours, and the style must not create a distraction. Additional religious accommodations may apply. The headteacher will be the arbiter in situations

where there is any uncertainty.

Henna/Mehndi Tattoos

Henna/Mehndi Tattoos are not allowed in school. However, it is understood that in some cultures or religious traditions, it might be considered as part of family celebrations such as Eid or weddings. If a student wishes to have henna/mehndi applied, parents must write to the head teacher for permission, in advance, at least a week prior to the event, to explain the rationale behind the request.

Headscarves

Headscarves should be plain black or navy blue if worn for religious reasons.

Jewellery, Make-up and Valuables:

Make-up, false nails, false eyelashes, nail varnish, fake tan are not acceptable. Coloured contact lenses are not permitted in school.

At our school, we are committed to upholding high standards of uniform and personal presentation for all students.

Make-up is **not permitted** for students in **Years 7 to 9**.

Reason: Younger students in Years 7 to 9 are still developing self-identity and confidence, so a no-makeup policy supports a focus on natural self-esteem and reduces peer pressure

Students in **Years 10 and 11** are allowed to wear **minimal makeup**. However, there is no expectation to wear it.

Reason: Allowing minimal makeup in Years 10 to 11 acknowledges growing maturity and encourages students to make responsible choices about appearance within clear boundaries. Allowing minimal makeup can also help students feel more confident and reduce anxiety, thus enabling them to focus better on their learning.

- Foundation or tinted moisturiser should be the same colour as the students own natural skin colour and lightly applied.
- Minimal mascara but no other eye makeup, including eyeshadow, eyeliner or false eyelashes.
- Natural looking eyebrows e.g. similar colour to hair, not obviously enhanced.
- No lipstick, lip liner or lip gloss.
- No obvious highlighting or contouring.
- No fake tan or gradual tanning moisturising products.

The decision about whether makeup is deemed to be minimal lies with school staff. Members of the Senior Leadership Team will be arbiters in instances whereby it is unclear. This policy allows a small degree of flexibility for older students while ensuring a consistent and professional appearance across the school.

Jewellery must be limited to a watch and one pair of either plain studs or diamante studs, no bigger than 3mm (as shown in the image below) worn one in the lobe of each ear. Health and Safety and security considerations mean that other items of jewellery are not permissible. Watches and studs should be removed for practical lessons when necessary or any lesson where they may pose a danger. Individual subject teachers will make the decision. The school cannot accept any responsibility for the loss of valuables.



No facial or body piercing is permitted for Health and Safety reasons. There are no exceptions to this.

Headphones, portable speakers, toys, tablets, games consoles, smartwatches (e.g. Apple watch or equivalent) etc: Students must not bring these items into school. The school will temporarily confiscate inappropriate items of jewellery, hoodies and valuables. Confiscated items can be claimed by students at the end of the week at 3 pm Friday.

A policy summary is available to parents with images to assist the purchase of correct uniform items.



School Uniform 2026/27

Whitworth Community High School insists on the highest standards of uniform. It is important that students take pride in their appearance and are aware of the impression their appearance makes within the community. Whitworth Community High School seeks to promote a sense of belonging and shared identity through the implementation of its uniform policy.

The Headteacher will be the arbiter in all matters relating to uniform, dress and appearance. Parents/carers and students are advised to consult the Headteacher, or a member of the Senior Leadership Team, if they are considering uniform, dress or appearance changes that might conflict with the school policy.

Any student who arrives wearing the incorrect uniform, wearing inappropriate jewellery, with henna/mehndi without prior permission, or with an unsuitable hairstyle or hair colour may be removed from lessons and parent/carer contacted. A record will be made in the student's file. If a student ignores or persistently ignores the uniform code, the school will need to employ further sanctions including detentions or internal exclusion.

Blazer - blue blazer for Y7 to Y10. Grey blazer for Y11 only - blazers are only available from school. **School Tie** - blue with red stripe clip-on tie - this is only available from school. **White Shirt or Blouse** - must be tucked into skirt or trousers, top buttons fastened. **Skirt or Trousers** - The WCHS skirt is only available from school. It is to be worn with the hem of the skirt on the knee or longer (not shorter, and rolling up of waistbands is not permitted); Trousers must be conventional black tailored school trousers (not skinny fit, denim, canvas, stretch, leggings or jeggings). Please purchase trousers that are long enough to at least touch the shoe (no 'crop' or 'ankle grazers' please). Trousers can be purchased from any retailer as long as they conform to the above description. In response to parent/carer feedback, a service has been set up on <http://www.swidtp.co.uk/> for any parents/carers who are struggling to find suitable trousers that meet the policy requirements. A pre-purchase fitting service is available in school and there is a free click-and-collect option for convenience and to reduce costs to parents/carers



Black Socks or plain black tights – not both. If wearing the skirt with black socks, then the socks must be knee high with no frills. If wearing school trousers, socks must be black and at least ankle length (not trainer socks).



Shoes - School shoes should be low heeled, below the ankle, completely plain black leather or leather look with no coloured logos. Please note that trainers, boots (including 'Kicker' style boots), pumps, canvas, 'Dolly' shoes, Tovni Lacers, or similar trainer style shoes, sports branded footwear and footwear with Dr Martens soles (including yellow stitching) or similar are not acceptable. School shoes can be purchased from any retailer to reduce costs to parents/carers as long as they conform to school standards.



Outdoor Coats Students are encouraged to wear a suitable coat on their way to and from school. Coats should be neutral colours if possible. Hoodies are not allowed and will be confiscated.



PE Kit - is available from Anne's in Bacup, Moses or Ziggy's in Rochdale. Students missing any item in their PE kit will be given a 30-minute detention after school on a Friday. WCHS top, plain royal blue shorts, royal blue or white sports socks, WCHS half-zip mid-layer top (optional), trainers with non-marking soles. Students may choose to wear WCHS leggings instead of shorts if they wish.

Hairstyles and colouring - Added hair colours must be natural and subtle. Dip dying and bright colours such as shades of pink, red, blue etc are not permitted for students. Students who have shoulder length hair, or longer, may be required to tie it back for health and safety reasons and/or if it obscures the face. Patterns cut into hair or eyebrows are also not acceptable. Extreme hairstyles e.g. where some hair is very short and the rest is not with a clearly defined line are not acceptable. Close all-over shaved heads (skinhead styles) shorter than a number 2 (8mm) are not permitted. Students are allowed to have low fade haircuts (0.5). Students must not take low fade haircuts to the extreme e.g. low fades (starting at 0.5) are acceptable but high fades/mid fades and/or skin fades are not. Facial hair must be short, neat, clean and groomed

Jewellery must be limited to a watch and one pair of studs worn one in the lobe of each ear (no spacers or stretchers). No facial or body piercing is permitted for Health and Safety reasons. Further details can be found in the uniform policy, available on www.wchs.co.

Make-up Make-up is not permitted in Y7-9. In Y10 & 11 minimal make-up is allowed. False nails, false eyelashes, nail varnish, fake tan are not acceptable. Coloured contact lenses are not permitted in school.